

# ARTICULATOR

## HOW GENERATIONAL DISPARITY IS MAKING BUYING AND SELLING A CHALLENGE 14

**11** An Emerging Legal  
Threat to Dentists

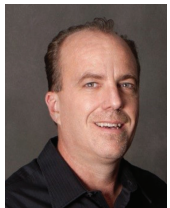
**20** 5 Pillars of Leading  
Practice Success



# TEAMWORK TO SUCCESS



By **Steve Kelly, Technical Operations Manager, Peebles Prosthetics Inc.**



This is an example of how good case planning and teamwork leads to a successful outcome. Kristen is an extreme case that touched all of us involved in her reconstruction. Diagnosed with a lower right mandibular tumor at age five, Kristen learned to live with the tumor as it grew larger. She remembers standing in front of the mirror at a young age and practicing talking in a way that would not show her lower teeth and tumor. Her Doctors believed that the tumor would stop growing when she did.

Flash forward to about four years ago, Kristen, now in her late twenties, had started seeing Dr. Stratil at The Dentist on Pearl. Dr. Stratil quickly saw that she needed to see a specialist as soon as possible.

The resection and reconstruction was done by a Head and Neck specialist. Kristen was referred to Colorado Oral Surgery for the implant surgical portion of her treatment. Dr. Gregg Lurcott placed Straumann implants using a guided surgical technique to allow us to make a very stable appliance. This was accomplished by taking impressions and having a barium guide fabricated that was scanned during her cone beam CT scan. Because the barium demonstrated the location of the teeth radiographically, we were then able to place the implants virtually directly under the occlusal table.

The decision was made to do a removable prosthesis, so changes could be made as needed and for better oral hygiene as well. We chose a titanium CAD/CAM bar with Locator attachments and a milled super structure for added stability. Custom impression copings had to be made due to the implants being so far sub gingival. Prior to milling the bar and sub structure, normal implant bar protocol was followed to insure a passive fit.

The try-ins all went very smoothly with the exception of the bite registration. Kristen did not have “normal” occlusion for quite some time and was not biting on her right side for over a decade. We confirmed a repeatable bite registration and decided to build her in this position, as it had been a comfortable place for her up until that point.

The thought process was; we would start her at this position and see if we were able to realign her enough that she could get her natural teeth to move into a more normal cusp-fossa position. This was also a factor in the decision to a removable appliance, and to make adding or subtracting materials easier and more cost effective.

The attention to detail by the surgeon, and open communication between the dental office, laboratory and the patient was a key factor in a very successful reconstruction. The case was delivered with minimal adjustments and Kristin has been doing great and loves her new smile!

*“As a laboratory manager and technician of over thirty years, I have learned the importance of pre-case planning and careful attention to the smallest of details. This case demonstrates what good teamwork can achieve and we wanted to share Kristin’s success story with our dental community. I feel that applying this type of approach to all your lab cases, not just the difficult ones, can give a better sense of accomplishment and pride in the work we deliver.”*

-Steve Kelly  
Technical Operations Manager  
Peebles Prosthetics Inc.

The happy team with Kristen's new smile

*“Working with Kristen on this case was such a joy and this experience reminded me of why I love dentistry. Our multi-disciplinary team was able to give Kristen her smile back and the end result was so rewarding!”*

-Stephanie Stratil, DDS

*“It’s hard to describe the feeling when a substantial feature of your body is removed and you lack the ability to perform typical functions normally. Losing my teeth at the age of 30 was difficult on so many levels. It took a year and quarter to get them back after having gone through the initial jaw surgery to remove the fibrous dysplasia. The day I got them back I was beyond ecstatic! I drove down Pearl St. and I-25 wanting to feel over and over again my new ability to make contact with teeth on all sides. We all shed tears of joy that day because the road to a new bite, new speech, and all other teeth related functions had finally come to a successful end!”*

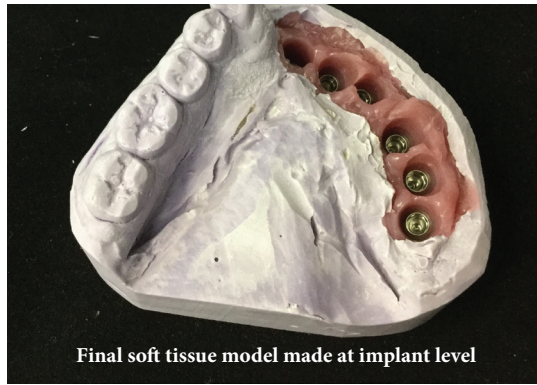
-Kristen ■

## About the Author

Steve Kelly was born and raised in central Illinois. He moved to Denver in 1995 to focus on advancing his knowledge in all phases of dental technology. Steve has worked with some of the top prosthodontists in the country helping him to build a well-rounded knowledge of dentistry. He joined Peebles Prosthetics in 2013 as the Technical Operations Manager to further challenge his passion for dental technology.



Open top custom tray made from a study cast of the healing abutments



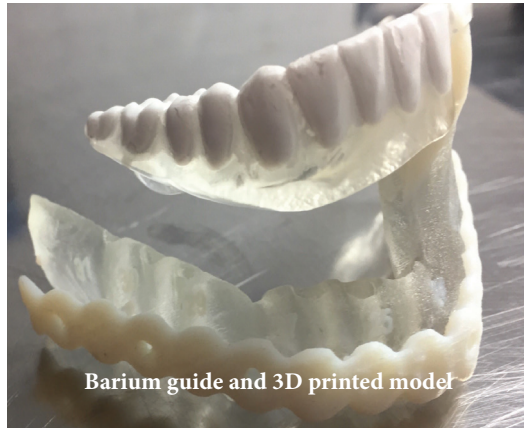
Final soft tissue model made at implant level



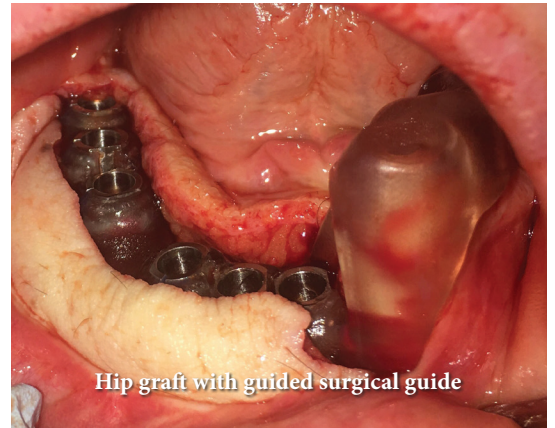
Verification jig with the wax set up



Free shaped cad - cam milled titanium bar with locator attachments



Barium guide and 3D printed model



Hip graft with guided surgical guide

**WE'VE GOT MORE THAN JUST YOUR BACK.**

**42%** of major data breaches occur in health care

Trusted cyber liability protection is one of the ways we help dental professionals. We offer a wide-range of products and services including property and casualty insurance, employee benefit plans, life/disability insurance, and financial planning. All from experienced staff who know health care from front to back.

**COPIC**  
COPIC Financial Service Group, Ltd.

*COPIC Financial Service Group is an endorsed administrator by the Colorado Dental Association for its members' business and personal insurance needs.*

**copicfsg.com**  
**800.421.1834**